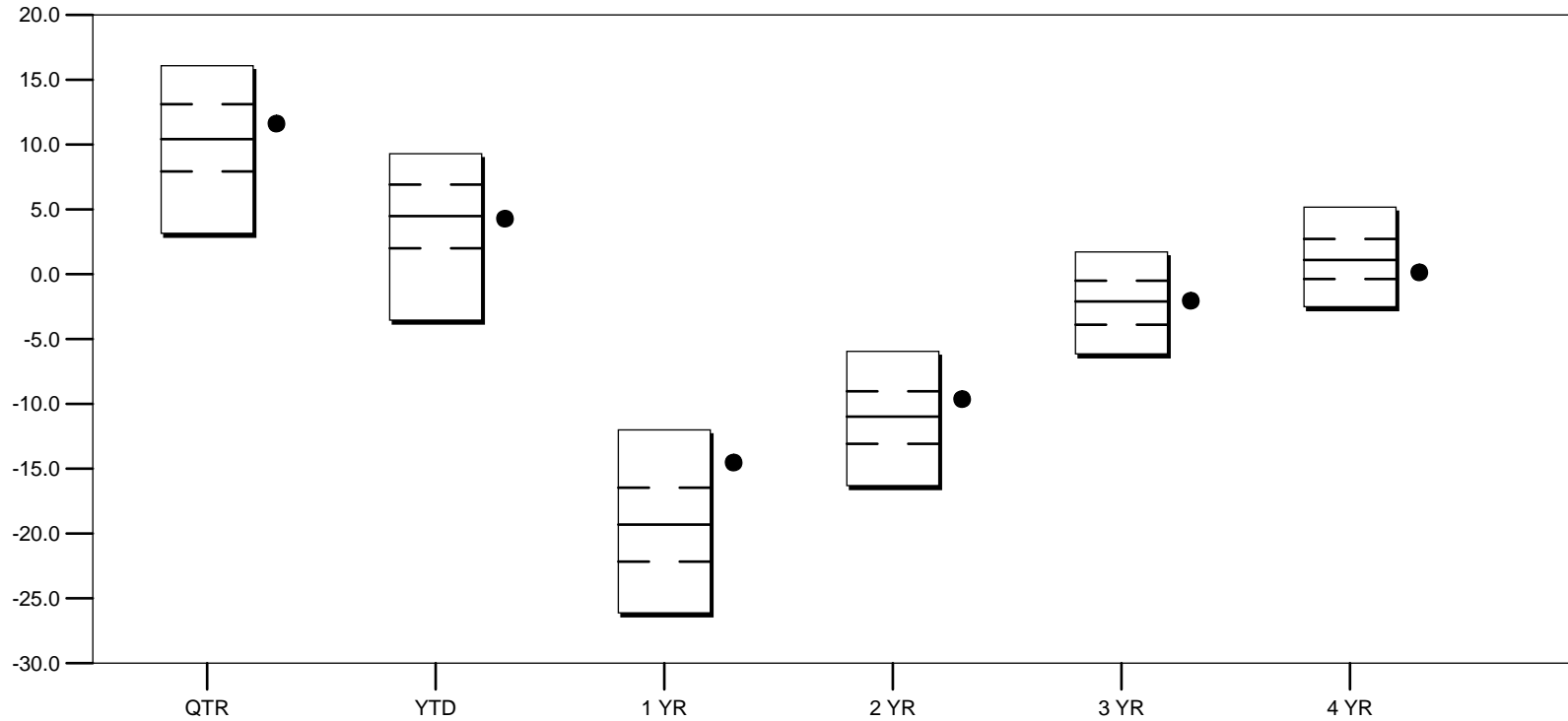


TOTAL FUNDS - FOUNDATIONS AND ENDOWMENTS

Return Quartiles
Periods Ending June 30, 2009

Annualized Rate of Return %

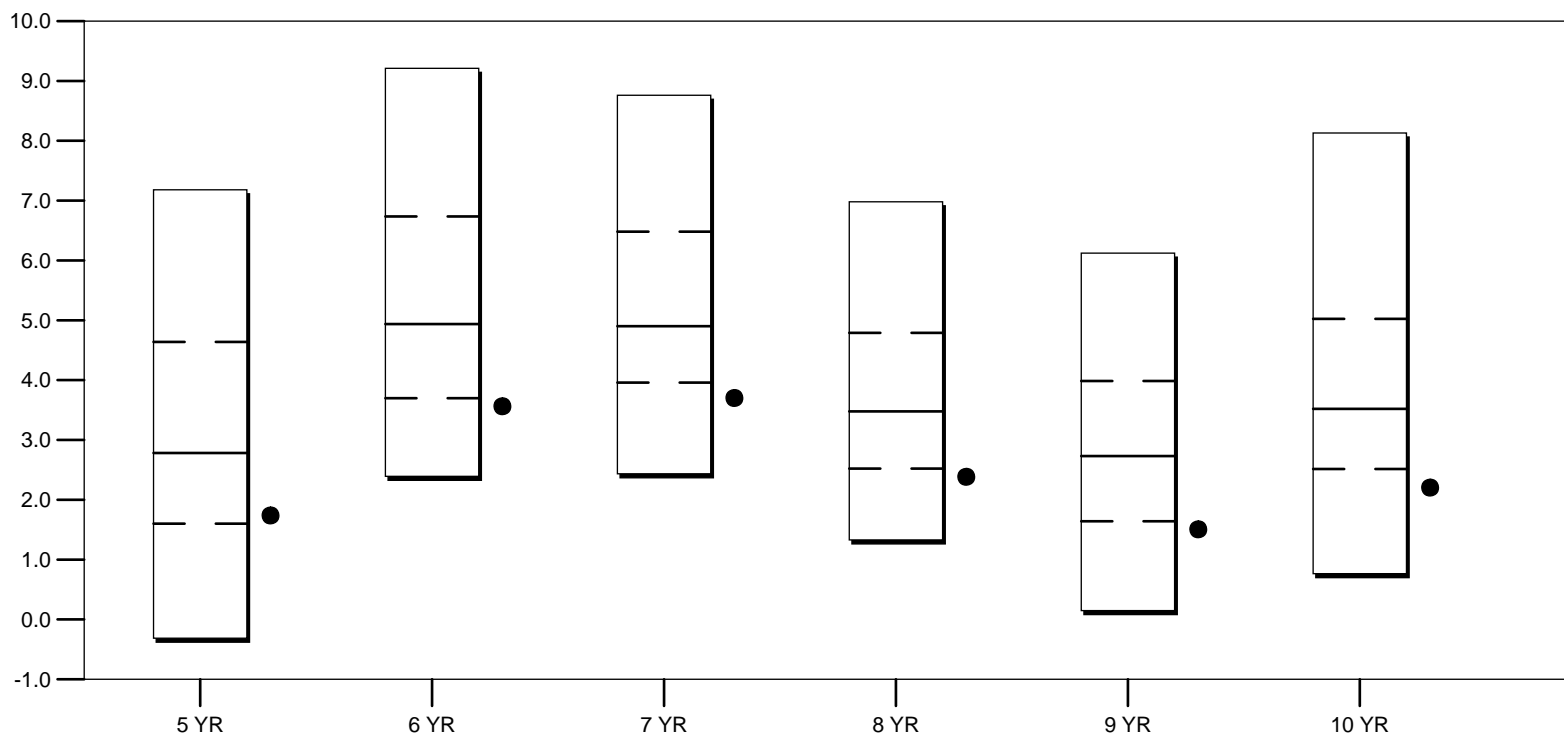


5th Percentile	16.08	9.29	(12.01)	(5.95)	1.72	5.17
25th Percentile	13.11	6.91	(16.47)	(9.04)	(0.50)	2.72
Median	10.42	4.48	(19.31)	(10.99)	(2.10)	1.09
75th Percentile	7.93	2.00	(22.17)	(13.08)	(3.90)	(0.38)
95th Percentile	3.15	(3.55)	(26.12)	(16.30)	(6.14)	(2.51)
● 50R3/40BC/10XUS	11.62	4.28	(14.53)	(9.64)	(2.06)	0.14

TOTAL FUNDS - FOUNDATIONS AND ENDOWMENTS

Return Quartiles
Periods Ending June 30, 2009

Annualized Rate of Return %



5th Percentile	7.18	9.21	8.76	6.98	6.12	8.13
25th Percentile	4.64	6.74	6.48	4.79	3.99	5.02
Median	2.78	4.94	4.90	3.48	2.73	3.52
75th Percentile	1.60	3.70	3.96	2.52	1.64	2.51
95th Percentile	(0.31)	2.39	2.43	1.33	0.15	0.76
● 50R3/40BC/10XUS	1.74	3.56	3.70	2.38	1.50	2.20